

## B

### CYLINDERS

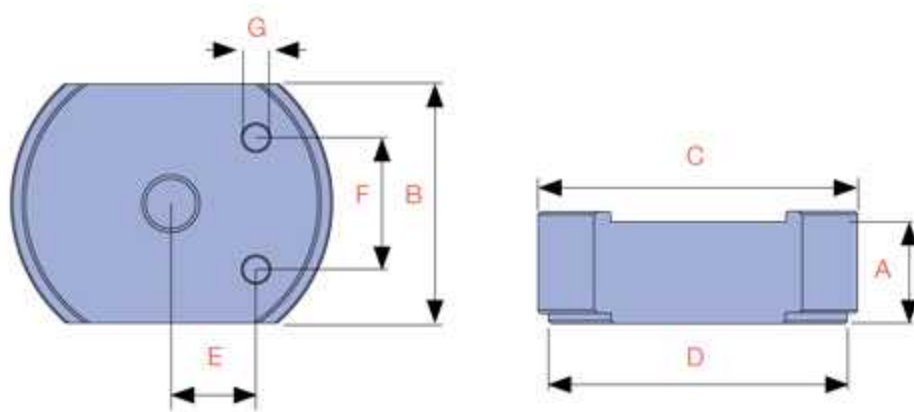
CYLINDER **STACK PLATE KITS** ARE AN EFFECTIVE ECONOMICAL SOLUTION WHERE AN EXTRA INCREASE IN CLOSED HEIGHT IS DESIRABLE.

They are designed for use with the RFJ-Series flat cylinders and incorporate a magnet to attach to the cylinder. All kits include an RFJ cylinder and carry case.



### Did you know...

Durapac offers a range of lightweight hand pumps, the perfect choice when portable manual power is desirable.



Kit Model No.	Includes Cylinder Model	STD Cylinder Height (mm)	Dimensions (mm)										Kit Weight (kg)
			A Stack plate height				B	C	D	E	F	G	
			1	2	3	4							
CSK-5	RFJ-50	32	3.4	12.7	25.4	31.8	41.4	64.7	58.7	13.6	28.5	5.1	2.4
CSK-10	RFJ-100	43	9.9	20.0	39.9	-	55.6	90.6	82.6	20.5	36.6	7.1	3.8
CSK-20	RFJ-200	51	9.9	20.0	39.9	-	76.2	109.6	101.6	28.4	49.3	10.1	7.0
CSK-30	RFJ-300	58	9.9	20.0	39.9	-	95.3	125.6	117.6	33.4	52.3	10.1	10.1